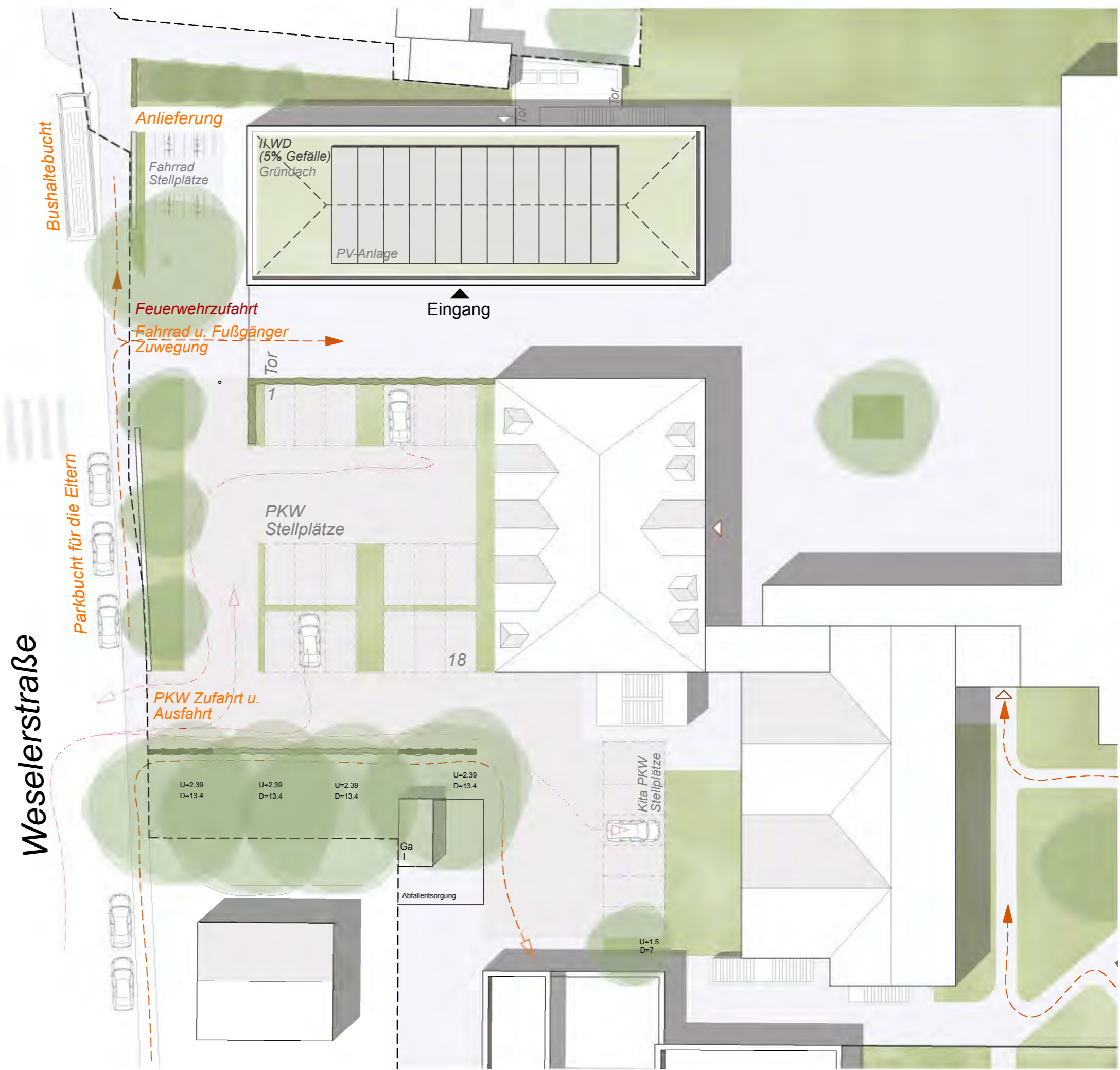
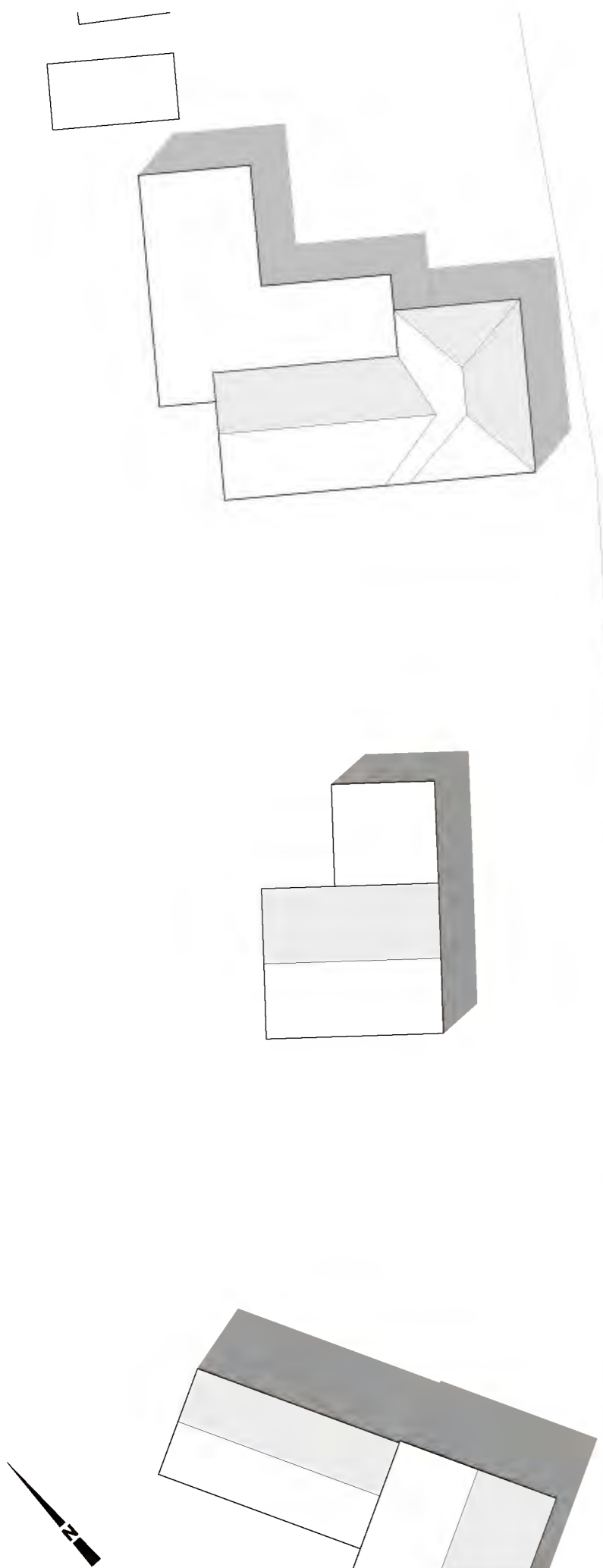


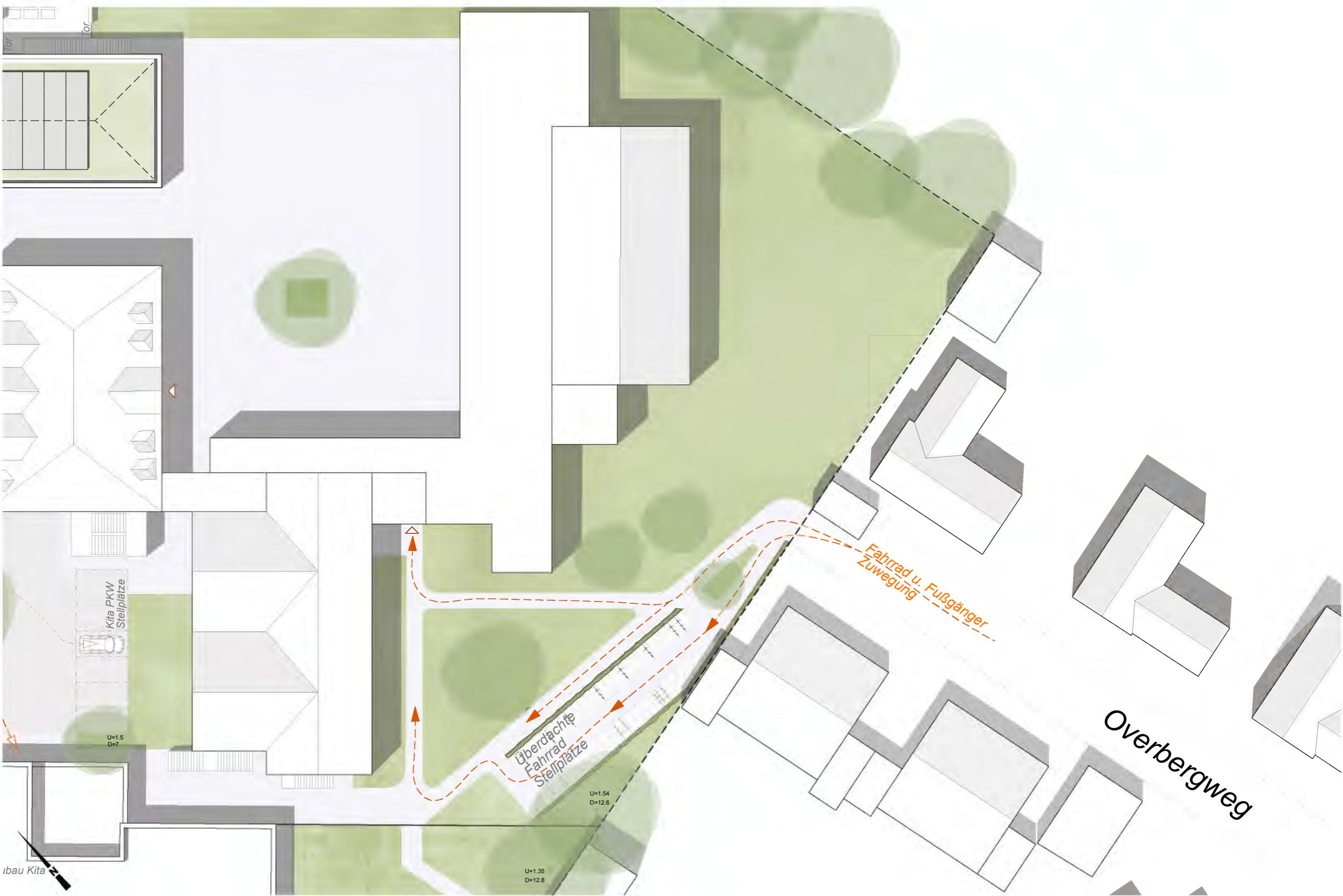


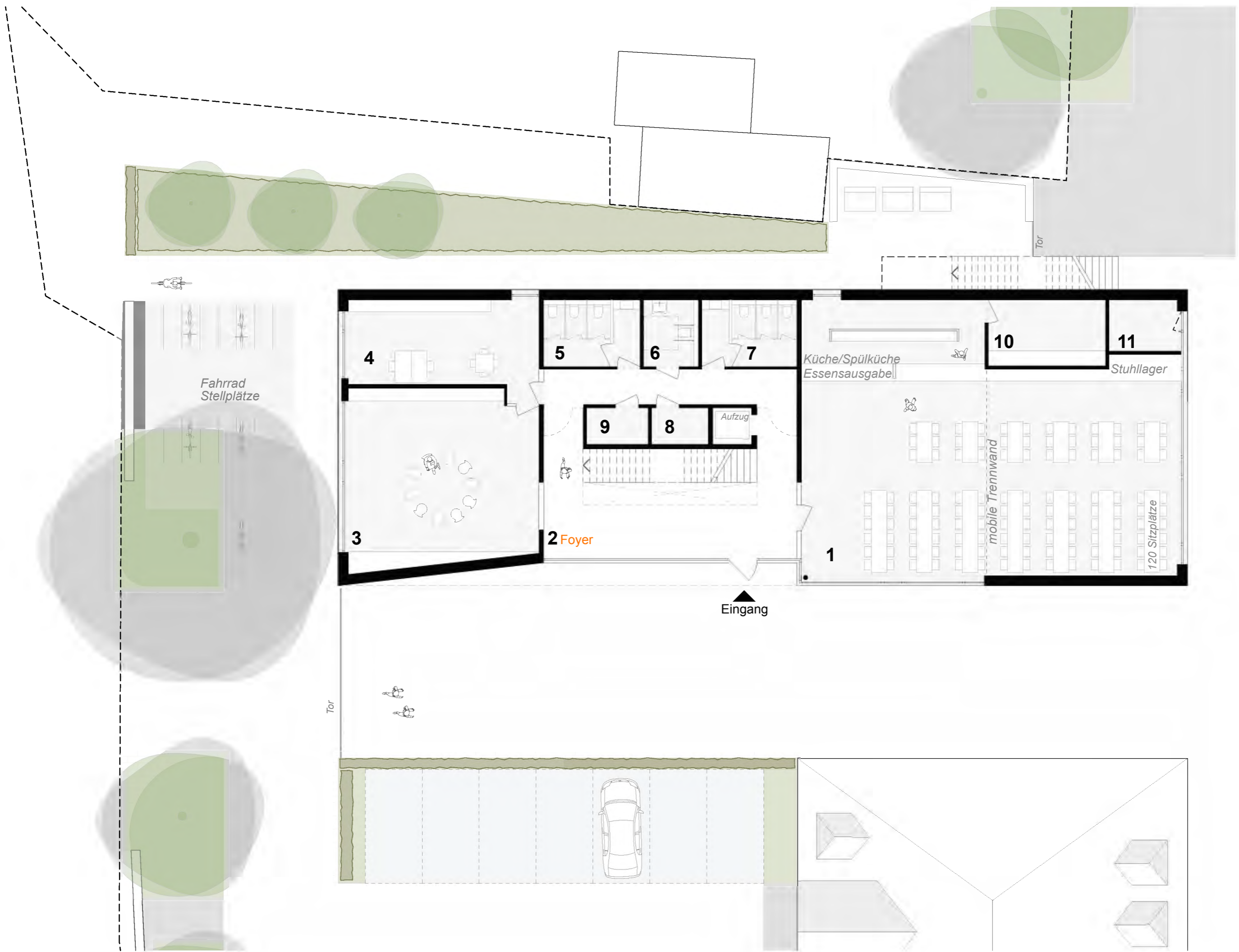
Astrid Lindgren Grundschule, Voerde-Spellen









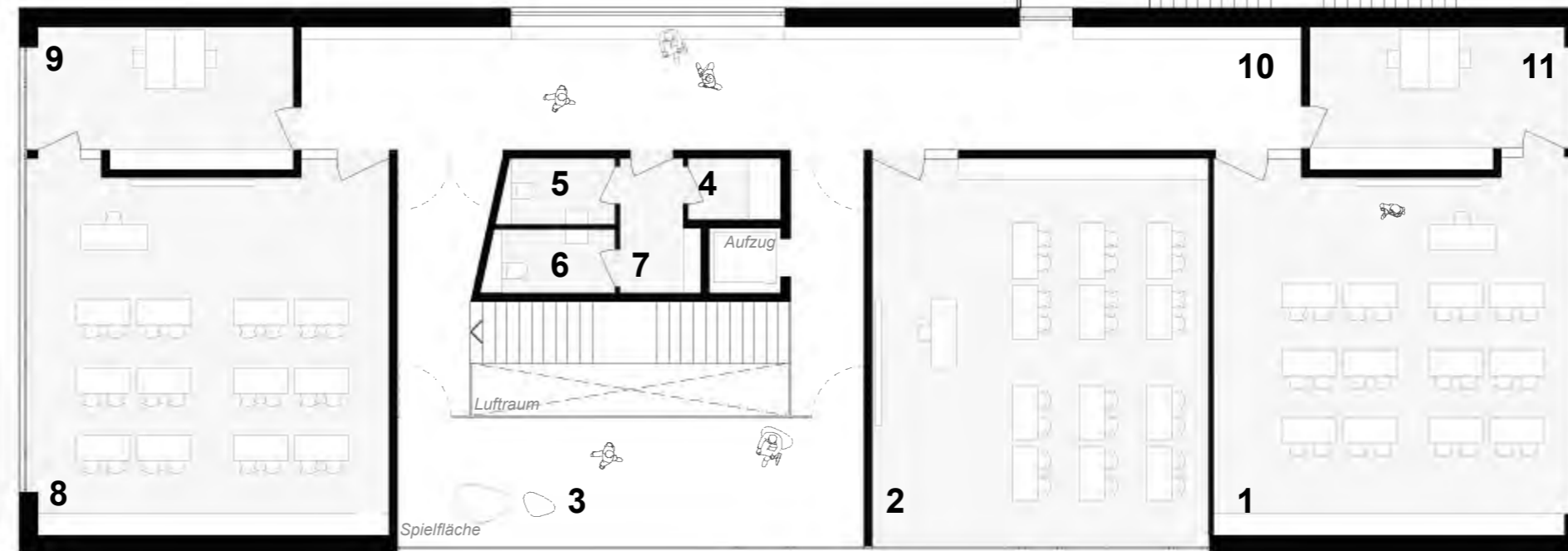


BGF
 Erdgeschoss = 485,55m²
 Obergeschoss = 485,55m²
gesamt = 971,10m²

Nutzfläche ges.: = 827,24m²

- 1_Mensa mit Küche**
176,18 m²
- 2_Halle**
77,63 m²
- 3_OGS**
63,46 m²
- 4_Büro**
32,56 m²
- 5_WC-M**
12,48 m²
- 6_WC-b**
6,69 m²
- 7_WC-J**
12,50 m²
- 8_Pumi**
3,99 m²
- 9_Technik**
8,46 m²
- 10_Lager**
15,14 m²
- 11_Außenlager**
6,75 m²

Fahrrad
Stellplätze



Eingang

BGF

Erdgeschoss = 485,55m²
Obergeschoss = 485,55m²

gesamt = 971,10m²

Nutzfläche ges.: = 827,24m²

1_Klasse I
73,05 m²

2_Klasse II
72,04 m²

3_Flur
34,14 m²

4_Kopierr.
3,24 m²

5_WC-M
3,93 m²

6_WC-M
4,08 m²

7_Flur
5,49 m²

8_Klasse III
72,90 m²

9_Differenzierungs.
20,24 m²

10_Flur
94,16 m²

11_Differenzierungs.
19,85 m²



Ansicht Süd



Ansicht West



Ansicht Nord



Ansicht Ost

