



## Erweiterung des Hafens Emmelsum

Kreis Wesel

### Begutachtung des geplanten Bauvorhabens



valtec simulations - Aachen

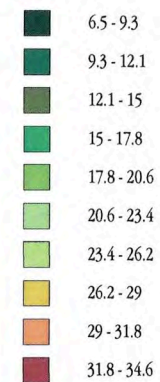
### PLAN2-Modell

#### Geländemodell

Kartenhintergrund © Geobasis NRW 2011

#### Legende

Höhen [m]

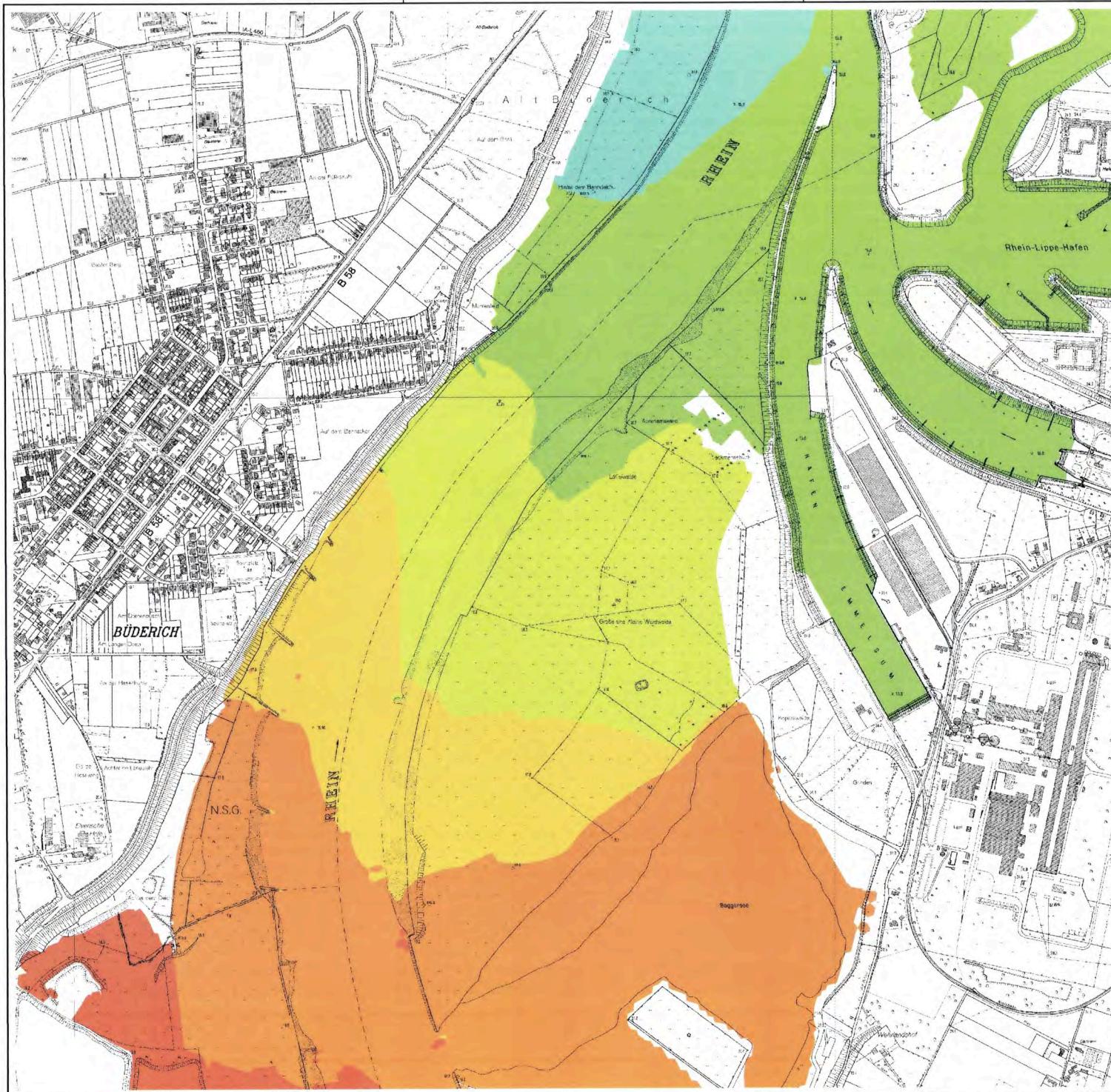


Maßstab **1 : 10000**

Geprüft

Zeichnungsnr. **C-01**

Datum **20 Dec 2011**



## Erweiterung des Hafens Emmelsum

Kreis Wesel

### Begutachtung des geplanten Bauvorhabens



valtec simulations - Aachen

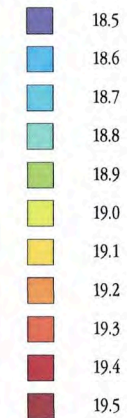
### Wasserspiegel PLAN2-Modell

Simulation für MHQ (AMW-4)

Kartenhintergrund © Geobasis NRW 2011

### Legende

Wasserspiegellage [mNN]

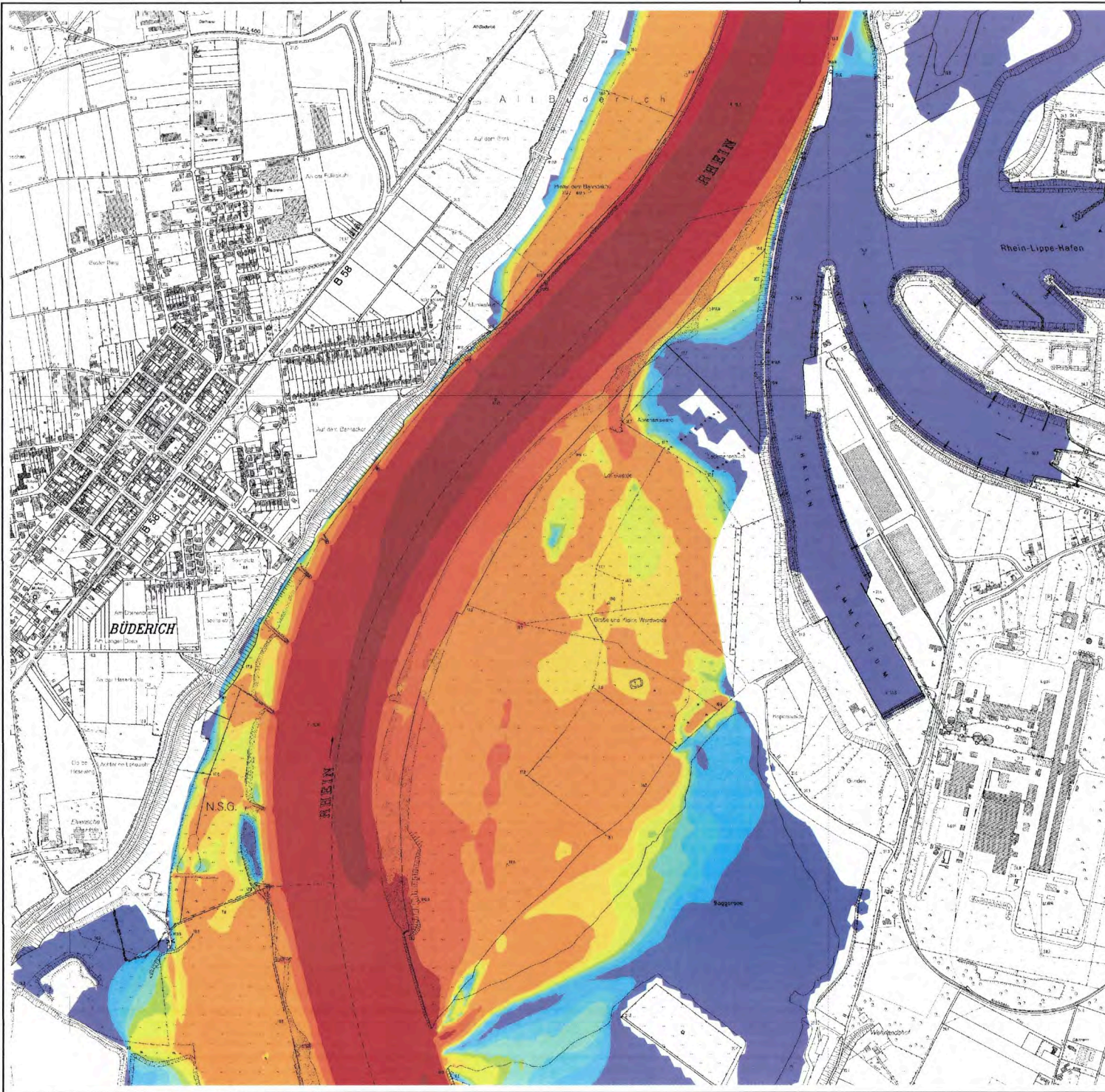


Maßstab **1 : 10000**

Geprüft

Zeichnungsnr. **C-02**

Datum **20 Dec 2011**



**Erweiterung des Hafens Emmelsum**

Kreis Wesel

**Begutachtung des geplanten Bauvorhabens**



valtec simulations - Aachen












**Strömungsgeschwindigkeit  
PLAN2-Modell**

Simulation für MHQ (AMW-4)

Kartenhintergrund © Geobasis NRW 2011

**Legende**

Geschwindigkeit [m/s]

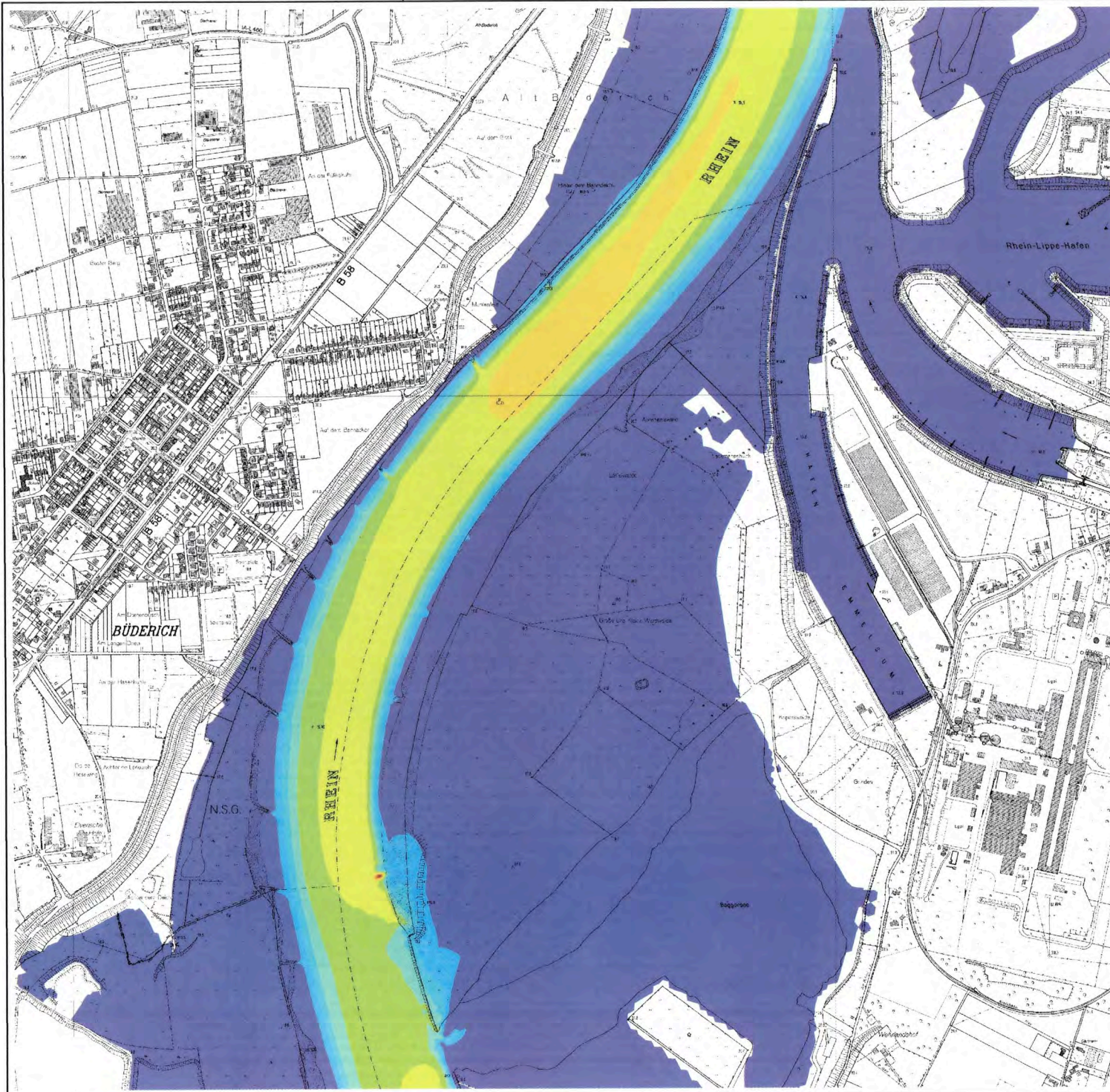
-  0.00
-  0.02
-  0.04
-  0.06
-  0.08
-  0.10
-  0.15
-  0.20
-  0.50
-  1.00
-  2.00

Maßstab **1 : 10000**

Geprüft

Zeichnungsnr. **C-03**

Datum **20 Dec 2011**



## Erweiterung des Hafens Emmelsum

Kreis Wesel

Begutachtung des geplanten Bauvorhabens



valtec simulations - Aachen

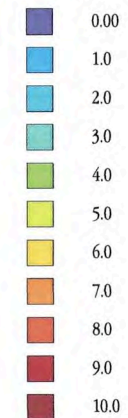
## Sohlschubspannung PLAN2-Modell

Simulation für MHQ (AMW+4)

Kartenhintergrund © Geobasis NRW 2011

## Legende

Spannung [N/m<sup>2</sup>]

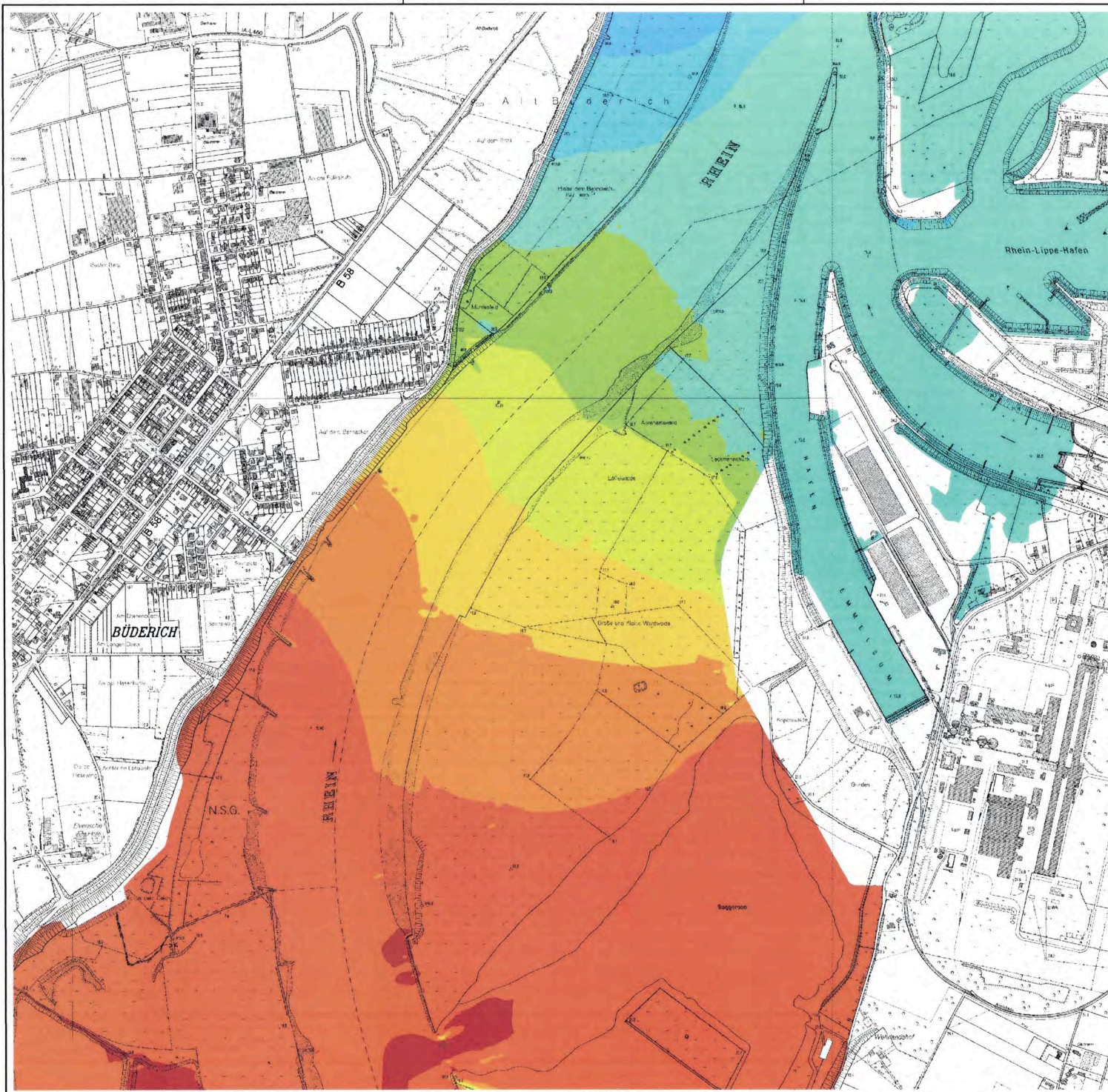


Maßstab **1 : 10000**

Geprüft

Zeichnungsnr. **C-04**

Datum **20 Dec 2011**



**Erweiterung des Hafens Emmelsum**

Kreis Wesel

**Begutachtung des geplanten Bauvorhabens**



valtec simulations - Aachen

**Wasserspiegel  
PLAN2-Modell**

Simulation für HHQ (1926)

Kartenhintergrund © Geobasis NRW 2011

**Legende**

Höhen [mNN]

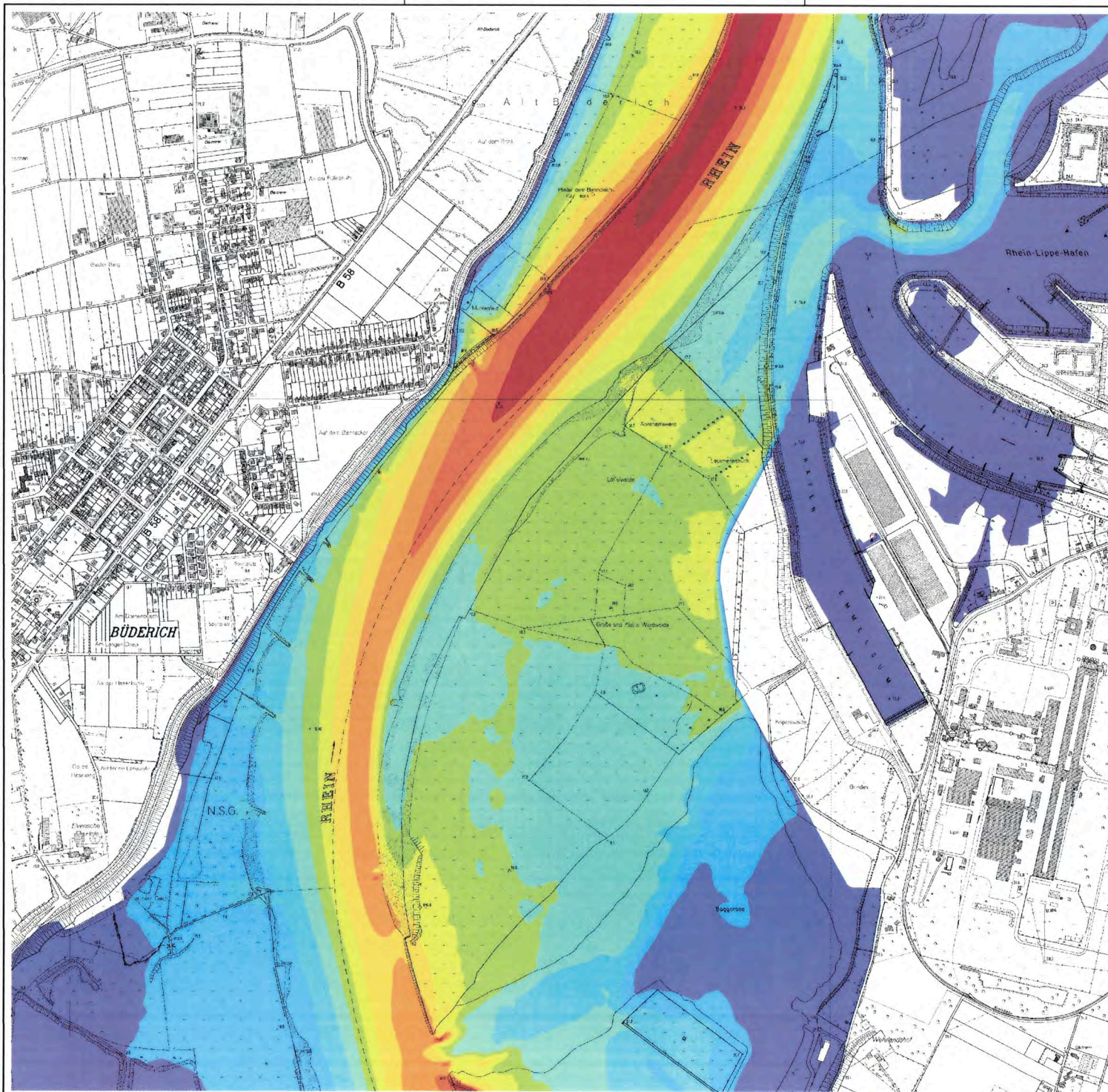
- 23.5
- 23.6
- 23.7
- 23.8
- 23.9
- 24.0
- 24.1
- 24.2
- 24.3
- 24.4
- 24.5

Maßstab **1 : 10000**

Geprüft

Zeichnungsnr. **C-05**

Datum **20 Dec 2011**



**Erweiterung des Hafens Emmelsum**

Kreis Wesel

**Begutachtung des geplanten Bauvorhabens**



valtec simulations - Aachen












**Strömungsgeschwindigkeit  
PLAN2-Modell**

Simulation für HHQ (1926)

Kartenhintergrund © Geobasis NRW 2011

**Legende**

Geschwindigkeit [m/s]

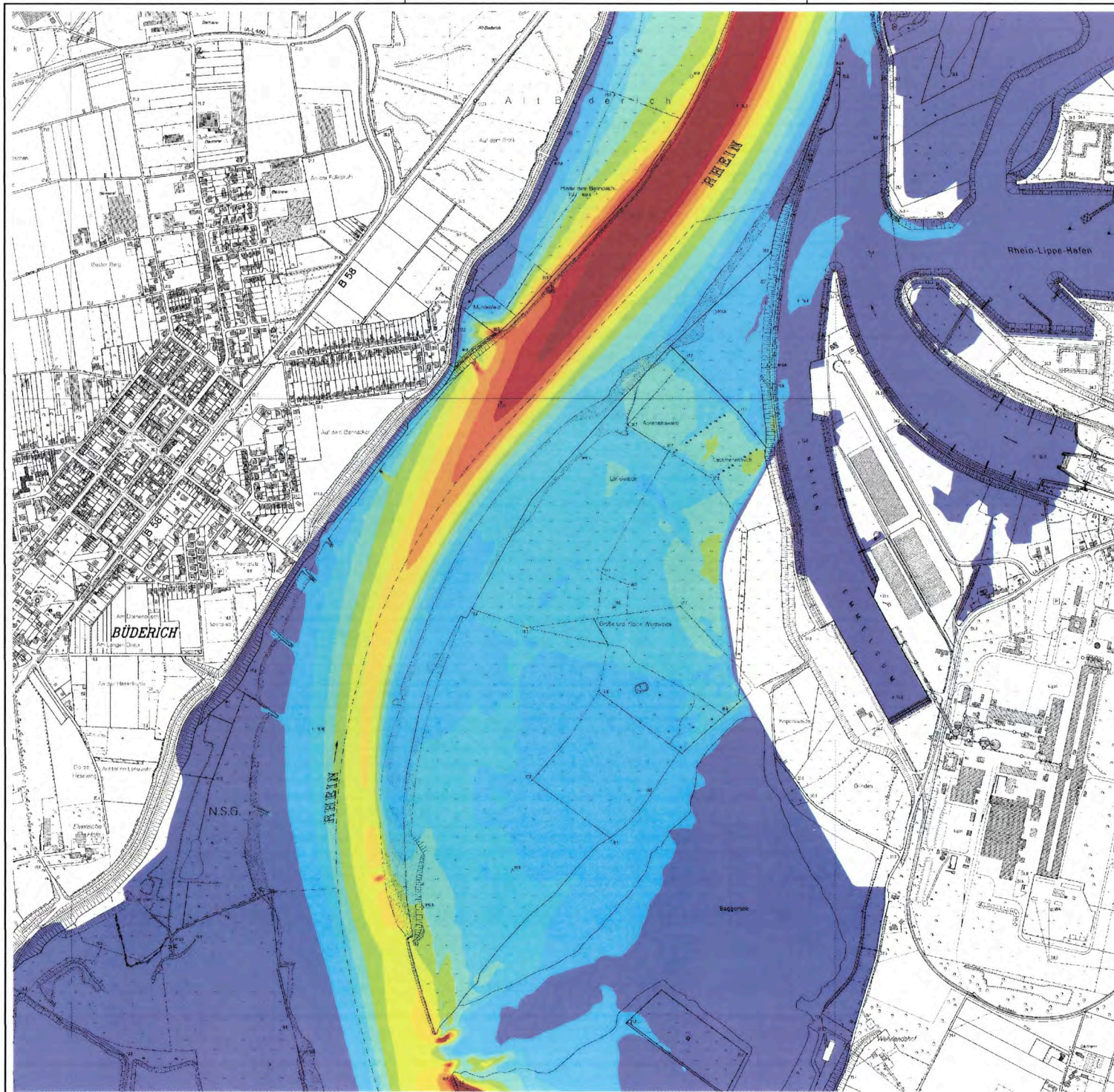
-  0.0
-  0.3
-  0.6
-  0.9
-  1.2
-  1.5
-  1.8
-  2.1
-  2.4
-  2.7
-  3.0

Maßstab **1 : 10000**

Geprüft

Zeichnungsnr. **C-06**

Datum **20 Dec 2011**



**Erweiterung des Hafens Emmelsum**

Kreis Wesel

**Begutachtung des geplanten Bauvorhabens**



valtec simulations - Aachen

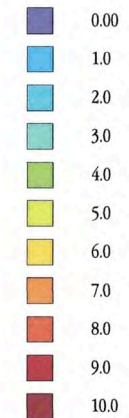
**Sohlschubspannungen  
PLAN2-Modell**

Simulation für HHQ (1926)

Kartenhintergrund © Geobasis NRW 2011

**Legende**

Spannungen [N/m<sup>2</sup>]



Maßstab **1 : 10000**

Geprüft

Zeichnungsnr. **C-07**

Datum **20 Dec 2011**